



**VEO-NVR** combines high security level, advanced features, high performance and ease of use to get the fastest, most robust, stable and secure, full featured and high performance Network Video Recorder Server on the market today.

## FEATURES

- ◆ Hard drive up to 1600TB (see VEO-Storage)
- ◆ Receive alarms from remote sites
- ◆ Remote search, playback, live view
- ◆ Support Pan/Tilt/Zoom cameras, extensible to add new control protocols.
- ◆ Uses high performance SQL database.
- ◆ High performance independent video capture and analysis daemons allowing high failure redundancy.
- ◆ Multiple Zones (Regions Of Interest) can be defined per camera. Each can have a different sensitivity or be ignored altogether.
- ◆ Large number of configuration options allowing maximum performance on any hardware.
- ◆ Set number of days to record
- ◆ Record to local, remote & NAS
- ◆ Motion Detection & Schedule
- ◆ Search by auto event or manual tags
- ◆ Easily export video & images
- ◆ Batch export multi channel video
- ◆ Supports live video in mpeg video, multi-part jpeg and stills formats.
- ◆ Supports event replay in mpeg video, multi-part jpeg, stills formats, along with statistics detail.

- ◆ Customize recording bit rate
- ◆ Manual or batch record button
- ◆ Auto storage overwrite
- ◆ User defined filters allowing selection of any number of events.
- ◆ Event notification by email or SMS including attached still images or video of specific events by filter.
- ◆ Automatic uploading of matching events to external FTP storage for archiving and data security.
- ◆ Includes bi-directional X.10 (home automation protocol) integration allowing X.10 signals to control when video is captured and for motion detection to trigger X.10 devices.
- ◆ Highly partitioned design allow other hardware interfacing protocols to be added easily for support of alarm panels etc.
- ◆ Multiple users and user access levels
- ◆ Multi-language support
- ◆ Full control script support allowing most tasks to be automated or added to other applications.
- ◆ Support external triggering by 3rd party applications or equipment.

## TECHNICAL SPECIFICATIONS

- ◆ Each channel works independently; supporting multi-channel playing and recording
- ◆ Bit rate is selectable within 36Kbps-3Mbps
- ◆ Video preview, supporting synchronous multi-route preview; supporting dynamic picture capture
- ◆ Supporting video planning establishment
- ◆ Recoding frame rate is adjustable: (PAL: 1-25 frames/s NTSC: 1-30 frames/s)
- ◆ Supporting clock and channel character superposition
- ◆ Flexible recording methods; supporting 3 methods such as timing, motion detection, manual recording
- ◆ Supporting multiple networks; can playback, download, record, etc
- ◆ Supporting mainstream protocols currently used in monitoring systems, such as TCP/IP, HTTP, ARP, ICMP, SMTP etc; realizing control of front-end camera and PTZ
- ◆ Adopting H264 compression method; supporting multi-channel of live audio monitoring and recording

## Display

- ◆ 25-picture display at most, supporting 1, 4, 6, 9, 16, and 25 pictures displaying in different segments
- ◆ Preview resolution can reach MP3.0
- ◆ Brightness, contrast and tints of each channel are adjustable
- ◆ 1, 4, 6, 9, 16, and 25 pictures shifting display and full screen display
- ◆ Superposition display of camera name, time and date

## Video recording

- ◆ Recording speed: 25 frames / s / route (PAL), 30 frames / s / route (NTSC); can be set up differently
- ◆ Recording speed is adjustable: 1 – 25 frames
- ◆ Multiple recording ways: timed recording, manual recording, motion detection recording
- ◆ Cycling recording: cycling recording automatically as per hard disk capacity
- ◆ Recording format: esf

## Playback

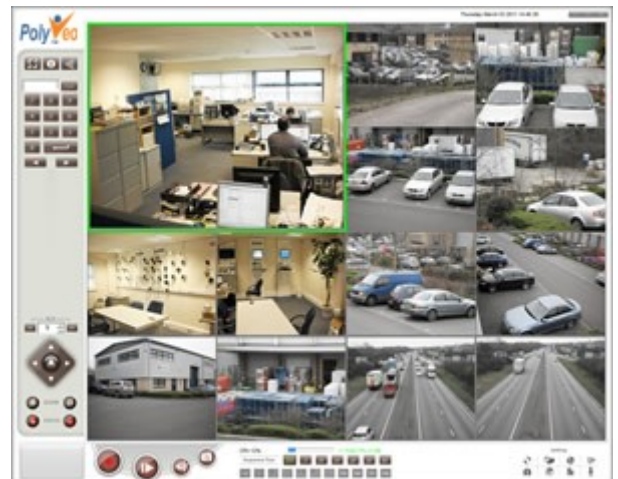
- ◆ Multiple playback modes: normal / fast / slow playback
- ◆ Playback window can be adjusted randomly: zoom in and out
- ◆ Multiple tasks can be operating at the same time such as picture display, video recording and playback
- ◆ Intellectualized video information index: as per date / channel number / video type
- ◆ Playback speed is adjustable: fast forward / snapback / slow forward / slow rev / single frame play

## Alarm

- ◆ Embedded motion detection; each route picture can be set up as motion detection alarming area
- ◆ Area of video motion detection and sensitivity are adjustable
- ◆ Alarming sound can be set up after video triggering alarm

## PTZ / lens control

- ◆ Controlling gear PTZ
- ◆ Controlling integrated high-speed ball
- ◆ Supporting multiple PTZ / lens control protocols
- ◆ PELCOD
- ◆ PELCOP



## Network functions

- ◆ Complete network functions, including video recording and video playback through LAN or WAN, remote control of PTZ and camera
- ◆ Supporting TCP/IP protocol; can form network monitoring system simply
- ◆ Automatic search function of network camera within LAN